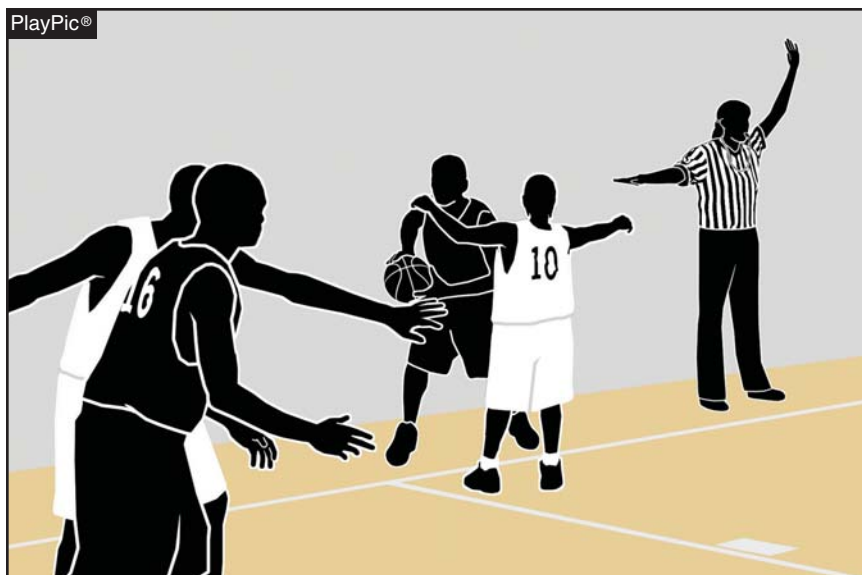


# Officials Quiz 2010-11

Sponsored by the National Association of Sports Officials  
Prepared by the Editors of *Referee* magazine



Is a player who has the ball for a throw-in in “player control?” Question 10 deals with the instances when a player is in control of the basketball.

In each of the following you are given a situation with the possibility of multiple answers. Decide which answer or answers are correct for NFHS, NCAA men’s and NCAA women’s rules, which may vary. (Answers appear on page 3)

1. Which of the follow are true of players occupying a marked lane space during a free throw?
  - a. They may step on, but not break the plane of the lane line.
  - b. They may step on, but not break the plane of the lines that separate lane spaces.
  - c. They may not break the plane of the lane line.
  - d. They may not break the plane of the lines that separate lane spaces.
  - e. The restrictions end when the try is released.
  - f. The restrictions end when the try strikes the backboard, ring or the free throw ends.

2. A1 shoves B2 during a dead ball and is assessed a technical foul. Who is allowed to shoot the free throws?
  - a. B2.
  - b. Any of the team B players currently on the court.
  - c. Any team B substitute.
  - d. The same player must shoot both free throws.
3. Which of the following kind of fouls are possible?
  - a. An intentional team control foul.
  - b. A flagrant team control foul.
  - c. An intentional personal foul.
  - d. An intentional technical foul.
  - e. A flagrant personal foul.
  - f. A flagrant technical foul.
4. A1 intentionally kicks team B’s designated-spot throw-in pass. Which of the following are true?
  - a. Team B shall receive a throw-in at the spot of original throw-in.
  - b. Team B shall receive a throw-in

at the spot nearest where the ball was kicked.

- c. The game clock shall start when the ball was touched (when it was kicked).
- d. The game clock shall not start when the ball was touched (when it was kicked).

5. Which of the following are true of continuous motion?
  - a. It applies to a try for goal.
  - b. It applies to a try for free throw.
  - c. Only has significance if a foul occurs by the offense.
  - d. Only has significance if a foul occurs by the defense.
  - e. The continuous motion rule only exists in the NBA.
6. Team B has control of the ball in its frontcourt. A1 commits a common foul against B2, and team B is in the bonus. Prior to the ball becoming live, B3 is assessed a technical foul for pushing A4 while the ball was dead. Which of the following are true?
  - a. No free throws are shot as the fouls offset.
  - b. B2’s free throws for A1’s common foul are shot first.
  - c. Team A’s free throws for B3’s technical foul are shot first.
  - d. Team B shall receive a throw-in at the spot of A1’s foul.
  - e. Team A shall receive a throw-in at the spot nearest B3’s technical foul.
  - f. Team A shall receive a throw-in at the division line.
  - g. Play is resumed with the results of B2’s free throws.
7. A1 has the ball for the alternating possession throw-in to begin the second half. A1 steps over the boundary line prior to releasing the ball. Which of these statements are true?
  - a. Throw-in violation by A1.
  - b. Out-of-bounds violation by A1.
  - c. Team A shall receive another throw-in.

## BASKETBALL OFFICIALS QUIZ 2010-11

- d. Team B shall receive the throw-in.  
e. Team A shall receive the next alternating possession throw-in.  
f. Team B shall receive the next alternating possession throw-in.
8. When can a three-second violation occur?  
a. When the ball is in the team's backcourt.  
b. When the ball is out of bounds during a throw-in.  
c. During an interrupted dribble in the team's frontcourt.  
d. When a try is in flight.
9. A1 has a throw-in along the endline. A1 throws the ball inbounds, but no player touches the ball. A1 runs after the ball and is the first to touch it near the division line. What is the result?  
a. Throw-in violation on A1.  
b. Team B receives a throw-in nearest the spot where A1 touched the ball at the division line.  
c. Team B receives a throw-in at the spot of the original throw-in.  
d. No violation. Play shall resume uninterrupted.
10. In which of these situations is there player control?  
a. When A1 is holding the ball for a throw-in.  
b. When A1 is holding the ball for a free-throw attempt.  
c. When the ball is being passed between A1 and A2.  
d. When jumper A5 is tipping the ball.  
e. During an interrupted dribble.
11. A1 attempts a try for goal and is fouled on the attempt by B2. After the foul, B5 commits basket interference on A1's try. Which of the following are true?  
a. Only B2's foul is penalized.  
b. Only B5's basket interference is penalized.  
c. Team A's head coach gets to choose which infraction is penalized.  
d. Both B2's foul and B5's violation are penalized.
12. When A1 is being substituted for by A6, when does A1 become bench personnel?  
a. When the ball first becomes dead prior to the substitution.  
b. When A6 is beckoned onto the floor.  
c. When A6 legally enters the playing floor.  
d. When A1 has crossed the boundary line near team A's bench.
13. A1 is standing at the free-throw line to shoot the first of two free throws. While the administering official has released the bounce pass towards A1, but prior to the ball reaching A1, which of the following can occur?  
a. Team A may be granted a timeout.  
b. Team B may be granted a timeout.  
c. A foul by A2 would be a personal foul.  
d. A foul by B2 would be a personal foul.  
e. A foul by A2 would be a technical foul.  
f. A foul by B2 would be a technical foul.  
g. A foul by A2 would be a team control foul.
14. When may substitute A6, who has legally entered the game during a dead ball, be substituted for by substitute A7?  
a. During that same dead ball period.  
b. During the first opportunity to substitute after the ball has become live.  
c. During the first opportunity to substitute after the clock has properly started.
15. Which edge defines these lines?  
a. The outside edge of the out-of-bounds boundary lines.  
b. The inside edge of the out-of-bounds boundary lines.  
c. The outside edge of the three-point lines.  
d. The inside edge of the three-point lines.  
e. The outside edge of the free-throw lane lines.  
f. The inside edge of the free-throw lane lines.
16. A1 has a throw-in while the clock is stopped. A1 holds the ball through the boundary line, and B2 slaps the ball out of A1's hands. What is the result?  
a. Violation on A1.  
b. Violation on B2.  
c. Technical foul on B2.  
d. The clock shall start and play shall continue.
17. A1 has the ball for a throw-in, and B2 is standing on the other side of the boundary line defending the throw-in. A1 releases the ball and it passes over the boundary line. B2 deflects the ball back towards A1 and the ball touches A1. Which of the following are true?  
a. A1 has caused the ball to be out of bounds.  
b. B2 has caused the ball to be out of bounds.  
c. A1 has committed a throw-in violation.  
d. B2 has committed a technical foul.  
e. Team A shall receive the throw-in.  
f. Team B shall receive the throw-in.
18. Who is allowed to shoot the free throws for A1 who was intentionally fouled by B2 and was injured to the extent that A1 must leave the game?  
a. Any of the four other team A players who were on the court.  
b. A1's substitute.  
c. The team A head coach gets to choose who shoots the free throws.  
d. The team B head coach gets to choose who shoots the free throws.
19. Which of the following are true of delay-of-game warnings?  
a. There is a maximum of one warning given to a team prior to a technical foul being assessed to that team.  
b. There is one warning given per type of delay prior to a technical foul being assessed to that team or a player of that team.  
c. After a warning has been given for one type of delay, a technical foul will be called if a different delay occurs later in the game.  
d. A technical foul for delay will only occur if a warning for that specific delay has been given to that team earlier in the game.

## BASKETBALL OFFICIALS QUIZ 2010-11

e. Multiple delay-of-game warnings on the same team for the same type of delay do not result in a technical foul.

20. Which of the following are true of both an intentional personal foul and an intentional technical foul (NFHS),

contact dead ball technical (NCAA Men), or player technical for dead ball contact (NCAA Women)?

a. Any player may shoot the resulting free throws.

b. The ensuing throw-in is at the point of interruption.

c. The ensuing throw-in is at the spot nearest the foul.

d. The ensuing throw-in is at the division line.

e. The foul counts towards the team-foul total towards the bonus.

### QUIZ ANSWERS

1 — NFHS — c, d, f (9-1-3d, 9-1-3g, 9-1-4); NCAA — c, d, e (9-1-2e, 9-1-2h, 9-1-2i)

2 — NFHS — a, b, c (8-3); NCAA — a, b, c, d (8-2-4)

3 — NFHS — c, d, e, f (4-19-3, 4-19-4); NCAA — c, e, f (4-29-2a2, 4-29-2c, 4-29-2d, 4-29-3f)

4 — All — b, d (NFHS 4-29, 5-9-4, 7-5-2a, 9-4; NCAA 4-45-1, 5-9-4, 7-5-1, 9-6-1, A.R. 168)

5 — All — a, b, d (NFHS 4-11-1; NCAA 4-14)

6 — NFHS — b, f (7-4-2, 7-5-6a, 8-5-2, 10-3-7 Penalty); NCAA men — b, f (4-53-1e Exc., 4-53-2a Exc., 7-5-7 Exc., 8-4-1b Exc., 8-4-4, 10-5-1d Resumption of Play); NCAA women — c, g (4-53-1e, 4-53-2c, 7-5-7, 8-4-1b, 8-4-3, 10-3-1c Penalty)

7 — All — a, d, f (NFHS 4-42-5c, 6-4-4, 6-4-5, 9-2-2, 9-2-5; NCAA 4-68-4, 6-3-2, 7-6-2, 9-5-1b, 9-15-1)

8 — All — c (NFHS 4-12-2c, 9-7-1; NCAA 4-15-2d, 9-9)

9 — All — a, c (NFHS 7-5-2a, 9-2-6, 7.4; NCAA 7-5-2, 9-5-1f, 9-15-1)

10 — NFHS — b (4-12-1, 4-12-6, 4-15-5); NCAA — a, b (4-15-1a, 4-21-6)

11 — All — d (NFHS 9-11 Penalty 1, 10-6 Penalty c1, 9.11.1E; NCAA 9-17-1b, 10-1 Penalty e, A.R. 77)

12 — All — c (NFHS 3-3-3, 4-34-3; NCAA 3-4-5, 4-24)

13 — All — a, b, e, f (NFHS 4-4-7b, 4-12-1, 4-19-5c, 5-8-3b, 6-1-2c, 10-3-7; NCAA 4-15-

1a, 4-19-1b, 4-29-3g, 4-29-3h, 5-13-1c, 6-1-4c, 10-3-1c, 10-5-1d)

14 — All — a, b, c (NFHS 3-3-3, 3.3.3A; NCAA 3-4-14)

15 — All — b, c, e (NFHS 1-4-1, 1-5-1, 4-9-2; NCAA 1-6-1, 1-7-1, 4-12, 4-52, 9-1-2i)

16 — All — d (NFHS 5-9-4, 5.9.4; NCAA 5-9-4)

17 — All — a, f (NFHS 7-2-2, 7-4-1, 9-3-1, 7.2.2; NCAA 7-2-2, 7-5-1, 9-3-1, A.R. 163)

18 — NFHS — b (8-2); NCAA men — a, b, c (3-4-17, 8-3); NCAA women — b (8-2-2a)

19 — NFHS — a, c (4-47, 10-1-5c through f); NCAA — b, d (4-17-1d through g, 4-17-2, 10-2-5b, 10-2-5c, 10-3-7, 10-3-11, 10-6-1m)

20 — All — e (NFHS 4-8-2, 4-19-13; NCAA 4-11-3, 10-5-1d)

Copyright © 2010 by Referee Enterprises, Inc. All rights reserved. Copy these quizzes for handout but not for resale or publication without the expressed written permission of Referee Enterprises, Inc. P.O. Box 161, Franksville, WI 53126. | Phone: 262/632-8855. | Fax: 262/632-5460. | E-mail: referee@referee.com



## FREE TRIAL ISSUE OF REFEREE MAGAZINE

**YES!** I'd like to sample the next issue of *REFEREE* – absolutely **FREE** – and please send me a **FREE** copy of *Smart Basketball Officiating - How To Get Better Every Game*. If I like my **FREE** issue I can subscribe at over 44% off the cover price. I'll get a full year (12 issues in all) for just \$46.95\*.

If after seeing the **FREE** issue I choose not to subscribe, I will return the invoice marked "Cancel." The **FREE** issue and *Smart Basketball Officiating - How To Get Better Every Game* are mine to keep. I'll owe nothing.

For immediate processing call 1-818-487-4549 or visit our website at [www.referee.com](http://www.referee.com) - click the **subscribe/renew** tab and enter promotion code **MOBBKR** to receive the FREE trial issue and FREE gift.

\*U.S. only

Name: \_\_\_\_\_

Address: \_\_\_\_\_

City, State, Zip: \_\_\_\_\_

E-Mail: \_\_\_\_\_

**Mail to:** Referee Magazine  
PO Box 16447  
North Hollywood, CA 91615-9121



#### Please indicate sports worked:

- |                                     |                                     |                                   |
|-------------------------------------|-------------------------------------|-----------------------------------|
| <input type="checkbox"/> Baseball   | <input type="checkbox"/> Basketball | <input type="checkbox"/> Football |
| <input type="checkbox"/> Soccer     | <input type="checkbox"/> Hockey     | <input type="checkbox"/> Softball |
| <input type="checkbox"/> Volleyball | <input type="checkbox"/> Wrestling  | <input type="checkbox"/> Other    |