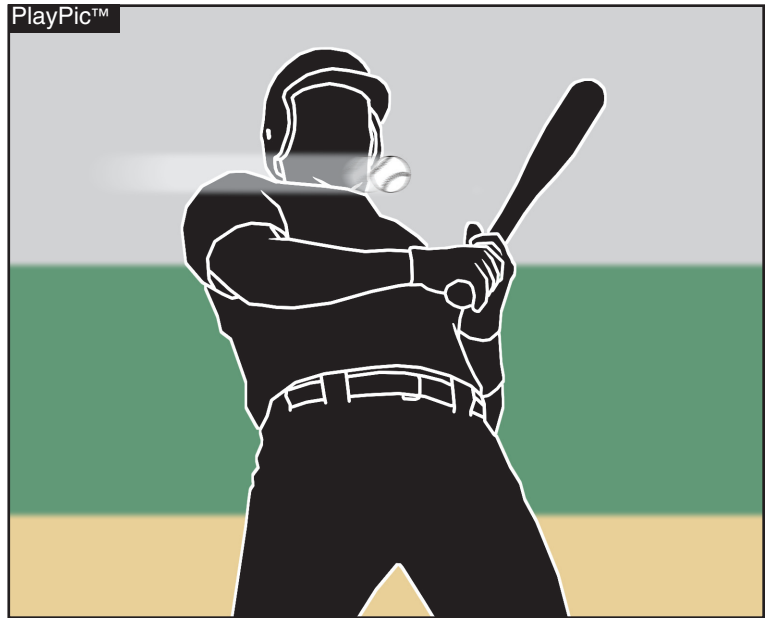


UMPIRES' QUIZ



Baseball 2009



In each of the following, you are given a situation and at least two possible answers. Decide which answer or answers are correct for NFHS, NCAA and pro rules, which may vary.

(Answers appear on page 5)

1. The score is tied in the bottom of the ninth inning. With R2 on second, B1 gets a base hit that scores R2. R2 misses home plate and is observed by the plate umpire. Since the scoring team thought the game was over, the on-deck batter did not move toward the batter's box. The pitcher, on the rubber, threw the ball to the catcher. The catcher caught the ball, stepped on the plate and appealed the runner missing home plate.
 - a. Score the run, the game is over.
 - b. Game continues, score tied.
 - c. Disallow the appeal because it was a pitch; therefore, it would be too late to appeal.
 - d. Call R2 out.
 - e. The defensive team could request time and make a dead-ball appeal.
2. A pitcher has a cut on his pitching hand that begins to bleed during play.
 - a. If the bleeding is not controlled, the substitute pitcher may take as many pitches from the game mound as he needs to be properly prepared to pitch.
 - b. The coach may start a relief pitcher warming up immediately, but that is not required.
 - c. The umpire may allow a bandage to be placed over the cut.
 - d. There is a specific limit of time as to how long the team has to control the bleeding or the pitcher must be replaced.
3. The coach in the third-base box is not wearing a helmet. What is the penalty?
 - a. The game may not continue until the coach is in compliance.
 - b. If the coach refuses to wear a helmet, he is automatically ejected.
 - c. Only non-adult coaches must wear helmets.
 - d. If a helmet is required by rule, it must have double ear flaps and meet the NOCSAE standard.
 - e. If a helmet is required by rule, no ear flaps are required.

4. With R2 on second base, the pitcher, from the set position, turns and fakes a throw to second.
 - a. Legal move.
 - b. Balk; the pitcher may not fake to second base.
 - c. The pitcher must disengage before faking a throw to second base on a pickoff.

5. With R1 on first base, the pitcher balks in his pickoff attempt, but throws wildly to first. The first baseman recovers the errant throw and then throws wildly into the outfield, allowing R1 to reach third base.
 - a. Leave R1 at third base.
 - b. Return R1 to second base.
 - c. Enforce the balk.
 - d. The ball is dead immediately.
 - e. The ball is dead when F3 picks up the ball.
 - f. The ball is dead when all playing action stops.

6. With R1 on first base, the pitcher balks in his pickoff attempt, but throws wildly to first. The first baseman catches the ball, then throws wildly to second base. The errant throw allows R1 to reach third base.
 - a. Leave R1 at third base.
 - b. Return R1 to second base.
 - c. Enforce the balk.
 - d. The ball is dead immediately.
 - e. The ball is dead when F3 catches the ball.
 - f. The ball is dead when all playing action stops.

7. With R3 on third base, the pitcher is standing on the rubber in the windup position. Prior to the pitcher addressing the hitter, the pitcher (who started with his glove hand in front of his body and pitching hand at his side) joins his hands in front of his body to adjust the ball with no other movement that would appear to be the start of the pitching motion. R3 breaks for the plate as the pitcher is joining his hands. The pitcher legally steps off the rubber and throws R3 out at home plate.
 - a. Balk.
 - b. The out stands.

8. The offensive coach at third base requests and is granted time to discuss strategy with the batter. The defensive coach, seeing that the offensive coach has called a timeout, runs to the mound to confer with the pitcher.
 - a. Only the offense has a charged conference.
 - b. The umpire does not charge the defense with a conference in the case of a prolonged injury timeout by the offense.
 - c. Charge both the offense and the defense with conferences.
 - d. Only the defense has a charged conference.

9. About the lines used in field markings:
 - a. They must be white in color at all times.
 - b. If they are permanently marked on a field in a non-white color, they are legal.
 - c. The batter's boxes and catcher's box must be completely drawn in before the start of each game.
 - d. Although not permitted by the rules, half-batter's boxes are now commonplace and acceptable.

10. With a runner on first base, left-handed B6 attempts to drag bunt, but misses the ball. The catcher, who catches the ball cleanly, attempts to throw behind the runner at first base. The throw hits B6, who has exited the box on the bunt attempt and has both feet clearly out of the batter's box.
 - a. It is a delayed-dead ball.
 - b. The ball is dead immediately.
 - c. B6 is out for interference.
 - d. Legal; play on.

11. With R2 on second and two outs, B5, hits a line drive back at the pitcher. The ball deflects off the pitcher's knee and bounces toward first base, near the foul line, but remains in fair territory. As the first baseman is fielding the ball, the batter-runner runs over the defensive player.

- a. No interference.
- b. The batter-runner is out for interference.
- c. Obstruction. If the batter is out, the out is cancelled and he is awarded first.
- d. Eject the batter-runner because he caused the collision.
- e. The fielder is protected in that instance.
- f. R2 is returned to second.
- g. R2 is awarded third.
- h. R2 is awarded home.
- i. R2 is awarded whatever base the umpires determine would negate the obstruction/interference.

12. With R1 on first and R2 on second, B3 faces a full-count pitch. He makes no move to get out of the way and is hit by the pitch.

- a. If the pitch is outside the strike zone, B3, R1 and R2 are all awarded one base.
- b. Only R1 and R2 are awarded one base.
- c. The ball is live and runners may advance past the awarded base.
- d. Since he made no move to get out of the way, the pitch is automatically a strike.
- e. If the pitch was in the strike zone, B3 is out and R1 and R2 are not awarded bases.

13. With R3 on third base, the batter swings and hits a high pop-up in foul ground between home and third. R3 unintentionally bumps the third baseman as he is coming over to catch the ball, causing him to stumble, lose sight of the ball and eventually drop the ball as it glances off his glove.

- a. Foul ball.
- b. The act by the runner must be intentional before the umpire can rule a double play.
- c. R3 is out.
- d. The batter is out.
- e. Regardless of intent, if a double play was possible, it can be called.
- f. R3 remains at third base.

14. With R3 on third and R1 on first and no outs, B1 strikes out swinging. In the process, he interferes with the catcher's throw to second base as R1 tries to steal. R3 scores as the catcher's throw to second base goes high and wide into center field.

- a. Call the batter out.
- b. Call R1 out since the batter struck out before the interference.
- c. Return R1 to first base.
- d. Return R3 to third base.
- e. R3's run counts
- f. Call R1 out only if a good throw would have retired him; otherwise return him to first base.

15. The batter lofts a high fly ball to right field. The pitcher obstructs B4 before he touches first base. The fly ball is caught by the right fielder.

- a. B4 is out.
- b. Award B4 second base on the obstruction.
- c. Award B4 first base on the obstruction.
- d. Ignore the obstruction.

16. With R1 on first and R3 on third, R1 is attempting to steal. B8 hits a ball that is caught on a diving play by F9 in deep right field for the second out. R1 was nearly at third base at the time of the catch. F9's throw sails into dead-ball territory, as he tries to double-up R1 at first, who had not yet retouched second base. R3 legally tagged and scored on the play.
- If R1 is attempting to return to first base, allow him the opportunity to retouch.
 - The runner must retouch second, retouch first and touch second before accepting the award of third base.
 - The runner must retouch first and touch second on his way to the award of third base.
 - R1 is awarded home but must retouch and touch all bases legally.
 - If the runner from first does not attempt to go back to first base and the defense initiates a legal appeal, R1 may be called out.
 - If R1 is called out, R3's run does not count.
 - If R1 is called out, R3's run counts.
 - R1 may be called out upon a legal appeal for leaving first base early because he was past second when the ball went into dead-ball territory.
17. With R3 on third and R1 on first, the first baseman, who is playing in front of the runner, dives to his right on a batted ground ball but cannot make the play. The second baseman is squeezing the middle of the infield and has no play on the ball. The batted ball strikes R1, who started from a position behind the first baseman.
- Call R1 out.
 - Award R3 home.
 - Allow the play to continue after the batted ball hits R1.
 - Return R3 to third base.
 - The ball is dead when it contacts R1.
 - Award the batter first base.
18. At the end of the regulation number of innings, the home team has used only one defensive conference. How many conferences, without having to make a pitching change, may the home team have in the first extra inning?
- One.
 - Two.
 - Three.
 - Four.
 - Zero.
19. At the end of the regulation number of innings, the home team has used one defensive conference. How many total conferences, without having to make a pitching change, may the home team make in extra innings?
- One per inning, no maximum.
 - One per inning, maximum of three.
 - One.
 - Two, regardless of when they are taken.
 - Three, regardless of when they are taken.
20. Pinch runner S1 is reported by his coach to the home plate umpire. The umpire notices the substitute has a hard cast on his arm.
- The player cannot participate under any circumstances.
 - It is OK if he is just a pinch runner.
 - Instruct the coach that the substitute must have the cast legally padded to be eligible to participate.
 - That is not covered by rule, so the umpire's decision on the legality of the cast is final.

Quiz Answers

1. NFHS — b, d, e (2-28-2, 8-2-6c, 9-1-1); NCAA, pro — b, d (NCAA 2-61, 8-6a[4]; pro 2.0 pitch, 7.08k, 8.05a)
2. NFHS, pro — a, b (NFHS 6-2-1g, 6-2-2c exception; pro 8.03); NCAA — a, d (3-9 AR, 9-4a-2 AR 5).
3. NFHS — c, d (1-5-1); NCAA — a, e (1-14g, 5-2b); pro — a, b, e (MLBUM)
4. All — a (NFHS 6-1-2, 6-1-3; NCAA 9-3c-3; pro 8.05c cmt)
5. NFHS — b, c, d (NFHS 5-1-1k, 8-3-1a); NCAA, pro — a, f (NCAA 9-3 pen. 2; pro 8.05 AR)
6. NFHS — b, c, d (NFHS 5-1-1k, 8-3-1a); NCAA, pro — b, c, e (NCAA 9-3 pen. 2; pro 8.05 AR)
7. All — b (NFHS 6-1-2, 6.1.2C; NCAA 9-1a-1b; pro 8.01a, 8.05j)
8. NFHS — a (3-4-5); NCAA — b, c (9-4a AR 4); pro — d (8.06)
9. NFHS — b, c (1-2-2); NCAA — a, c (1-3, 1-3a, 1-3b); pro — a, c, d (1.04)
10. All — b, c (NFHS 7-3-5 pen.; NCAA 7-11f; pro 6.06c)
11. All — b, e, f (NFHS 2-21-1b; NCAA 8-5d AR 2; pro 7.09f)
12. All — a, e (NFHS 7-3-4 pen.; NCAA 8-2d; pro 6.08b)
13. NFHS — d, f (7-4-1f); NCAA, pro — a, b, c (NCAA 8-5d, 8-5q; pro 7.08b cmt; 7.09f)
14. NFHS — a, d, f (7-3-5 pen., 7.3.5C, 8-4-2g); NCAA, pro — a, b, d (NCAA 8-5d; pro 6.06c, 7.09e)
15. All — a, d (NFHS 8-4-1b, 2008 interp.; NCAA 6-3d-2; pro MLBUM 6.22)
16. NFHS — a, c, e, g, h (8-2-1, 8.2.5A, 8-2-6k); NCAA, pro — a, c, e, g (NCAA 2-51 AR, 5-6c AR 2, 8-6a [1] AR 3; pro 7.05g, 7.05i cmt, 7.08e)
17. NFHS, pro — c (NFHS 8-4-2k; pro 7.08f, 7.09k); NCAA — a, d, e, f (8-5k)
18. All — a (NFHS 3-4-1; NCAA 9-4b; pro 8.06b)
19. NFHS, pro — a (NFHS 3-4-1; pro 8.06b); NCAA — b (9-4a)
20. NFHS, NCAA — c (NFHS 1-5-8; NCAA 1-15f); pro — d (9.01c)



FREE TRIAL ISSUE OF REFEREE MAGAZINE

✓**YES!** I'd like to sample the next issue of *REFEREE* – absolutely **FREE** – and please send me a **FREE** copy of *Smart Baseball Umpiring - How To Get Better Every Game*. If I like my **FREE** issue I can subscribe at over 44% off the cover price. I'll get a full year (12 issues in all) for just \$46.95*.

If after seeing the **FREE** issue I choose not to subscribe, I will return the invoice marked "Cancel." The **FREE** issue and *Smart Baseball Umpiring - How To Get Better Every Game* are mine to keep. I'll owe nothing.

Name: _____
 Address: _____
 City, State, Zip: _____
 E-Mail: _____

Please indicate sports worked:

- | | | |
|-------------------------------------|-------------------------------------|-----------------------------------|
| <input type="checkbox"/> Baseball | <input type="checkbox"/> Basketball | <input type="checkbox"/> Football |
| <input type="checkbox"/> Soccer | <input type="checkbox"/> Hockey | <input type="checkbox"/> Softball |
| <input type="checkbox"/> Volleyball | <input type="checkbox"/> Wrestling | <input type="checkbox"/> Other |

Mail to: Referee Magazine
 PO Box 161
 Franksville, WI 53126-0161

Phone: 1-800-733-6100 or visit our website at www.referee.com

*U.S. only

M92BSR